

Solebury Chronicle



A newsletter of the Solebury Township Historical Society

Solebury Citizens Honored at New Year's Brunch

Each year the Solebury Township Historical Society accepts nominations of past and present Solebury residents for the Honored Citizens of Solebury awards. If you know of someone who has contributed significantly to Solebury Township, please ask us for a nomination form. The awards presented at the 2013 New Year Brunch are:

Richard F. Carlson

Richard "Dick" Carlson, a resident of Savannah, Georgia, moved to Rolling Green Farm in Solebury in 2007. The property contains an 18th century stone house and barn once owned by the Paxson family.

Dick quickly became a valued Society member and volunteer, helping wherever he was needed — unpacking books, moving furniture, helping with filing, sweeping the walk to the schoolhouse, and more.

Dick offered the use of his property for our annual picnic. Since then he renovated the barn, and offers it as a venue at no cost to the Society and many other local non-profit groups for events from art shows to dances. Dick is a dedicated volunteer and supporter of the Solebury Township Historical Society.

William F. Taylor: 1883 – 1970

Well known for his impressionistic landscapes of the Delaware River and the areas around his Lumberville home, William Francis Taylor was a member of the group of artists who gathered and studied together at Phillips' Mill, known as the Pennsylvania Impressionists. The Phillips' Mill Community Association was founded in 1929 after Taylor formed a subscription committee to purchase the Mill from Dr. George M. Marshall.

Taylor was active in historic preservation. In 1930 he acquired property at Cuttalossa and River roads. He restored an historic building and launched the Cuttalossa Inn, while living across the street in Hard Times Tavern.

Taylor was the first president of the Delaware Valley Protective Association, a group organized to protest the draining of the canal to widen River Road. Taylor published Towpath Magazine as a monthly reminder of the pressing issue and to stimulate continued interest.

Photos by Rick Gould



William F. Taylor with granddaughter Bereth, c. 1969



Taylor's daughter, Phyllis Euler, accepted the award on his behalf from Elaine Crooks.

INSIDE THIS ISSUE

- President's Letter
- Solebury Meeting Cemetery Tour
- Meet the new Board members
- New Year's Brunch
- Business Members
- Santas at Museum
- New members
- Thank yous
- Upcoming events

History Quiz

Which bridge was the first to link Solebury Township with New Jersey and when was it built?

Answer on page 5

Presidents Message

I want to personally thank everyone who attended our annual picnic in August. It was wonderful day. We had about 80 attendees all enjoying the music, delicious food and each other's company. Special thanks to the following volunteers. **Will Rivinus** and **Dickie Ann Boal** for allowing us to take over their property. Will displayed several of his building models for us, and Dickie Ann provided each of our tables with freshly cut and arranged flowers; other helpers included **Paul Lanctot, Tom Dietrich, Pat Witliki, Marne Dietrich, Chuck Mintzer, John and Penny Armagost, Don Fitting, Dick Carlson, Steve Crane, Phil Getty, and Gerry and John Merrium**. A large round of applause to others who just stepped-in, stepped-up and did what needed to be done.

October 28 was the **Friends Cemetery Walking Tour**. **Rayna Polsky** and **Jesse Crooks** were our guides and introduced us to some of the original Solebury family members along with educating us about unique Quaker burial practices.

Our **Annual Member's Dinner** at the Audubon barn was a great evening. We had a wonderful turn out, fabulous dishes and a fun series of questions that kept everyone running from person to person seeking the correct answer. Thank you, **Linda Metcalf**, for organizing the dinner and putting the "Ask your Neighbor" together for us. Once again, we couldn't put these events on without volunteers from our membership. Special thanks to **Chuck Mintzer, Paul Lanctot, David Benner, Pat Witlicki, Marne Dietrich, Phil Getty, Steve Crane, Dick Carrick**.

In December we had an **Antique Santa** display at our Museum in the township building, courtesy of **Kathy Hausman** and **Jim Hill**. There were gingerbread cookies, hot chocolate and a reading of *The Night Before Christmas*. It was a lovely way to spend a pre-Christmas Sunday afternoon.

Our **New Year's Brunch** had about 120 attendees. **Holly Hedge**, with **Joe Luccaro** and his amazing staff, always make this day special. The food was delicious, **Bob Egan** is worth the ticket price, the Honored Citizens Awards touching and the raffle a huge success. If you missed this year, please plan to join us for 2014. You won't be disappointed. I would especially like to thank **Marne Dietrich** who came at 10 in morning to help set up, even though she was unable to attend the brunch.

The support from our membership when we call for volunteers is amazing, and our events would not be nearly as successful without your help. Please keep answering our pleas for assistance. It really makes a difference and we can't thank you enough.

Keep in mind that the Schoolhouse is open every Wednesday afternoon from 3 to 5 pm. It is *manned* by **Joan Fitting** and **Gwen Davis**. Please stop by any Wednesday and say hello.

I would also like to thank **Linda Kenyon** and **Melody Hunt**, who have accepted positions on the STHS Board. Linda will be the Events Chair and Melody will handle the Development Chair position. Welcome to both of you. We are so excited to have you on the Board.

We anticipate beginning work on the schoolhouse shortly; we will keep you posted as events develop.

We look forward to seeing all of you, our loyal members, over the next few months.

Donneta



Solebury Township Historical Society
Drawer 525
Solebury, Pennsylvania 18963
215-297-5091
www.soleburyhistory.org

Board of Directors

Donneta Crane, *President*
Beth Carrick, *Vice President*
Elaine Crooks, *Treasurer*
Rayna Polsky, *Secretary*
Jim Brown, *Oral History*
Gwen Davis, *Research*
Joan Fitting, *Archives*
Melody Hunt, *Development*
Linda Kenyon, *Events*
Robert McEwen, *Education*

Board emeritus

Sally Jagoe
Franca Warden

Do You Know?



Photo by Beth Carrick

Stone ruins of the Heath Grist Mill dating from 1702 located on S.Sugan Road just south of the RR crossing on the grounds of the Springdale mansion. To learn more about the many mills of Solebury, purchase *Old Mills of New Hope-Solebury* by Willis Rivinus from the Society for \$19.95.

Bringing in the New Year - In Style!

The 12th annual New Year's Brunch was once again a rousing success. Our friends and neighbors came together to enjoy a delicious brunch in the lovely setting of the Holly Hedge Estate.

Attendees had the opportunity to purchase raffle tickets for a chance to win one of some 20 raffle items donated by local businesses as well as to bid on three wonderful silent auction items. Proceeds from the raffle and auction help make up the difference between the ticket price and the actual cost to the Society. Next time you encounter one of the donors, please thank them for their support.

And plan now to join us on January 1, 2014!

Brunch Sponsors

Addison Wolfe Real Estate
First National Bank & Trust Company of Newtown

Friend

Jonathan & Diane Downs

Silent Auction Donors

Richard Carlson
Mick Schmidt
Linda Kenyon

Raffle Donors

1740 House	Holly Hedge Estate
AKA Salon	Hotel Du Village
Allure	Karla's
Black Bass Hotel	New Hope Winery
Bucks County Playhouse	Pearl Mintzer
Buttonwood Grill	Pierre's Chocolate
Dot Bunn	Pudge Cakes
Eagle Diner	Salon Gratitude
Earl's Bucks County	The Inn at Phillips Mill
Four Seasons Car Wash	Tuckamony Farm
	Zoubi



Brian Keyes enjoying the music of Bob Egan.



Our many guests enjoyed delicious food and conversation.



Dave Benner perusing the array of raffle items.



Bridget & Joe Wingert; Audrey & Bob Long

Solebury Friends Cemetery Tour

Following is a recap of a tour held on October 28 by the Solebury Township Historical Society, led by Jesse Crooks and Rayna Polsky.

The Solebury Friends burial ground was first opened in 1809 and contains the graves of a diverse cross-section of Solebury residents spanning many generations, from Quaker farmers to Bucks County Impressionist painters. It is the resting place for people from all segments of the socio-economic spectrum; exploring the graveyard you'll find many prominent old families whose memory persists in the form of road names (Ely, Paxson, Armitage, Reeder, Comfort, Kitchen, Atkinson), as well as the unmarked graves of unknown strangers.

We began the tour in the oldest section of the graveyard, where the distinct burial practices of early Quakers can be observed. In the early days, Quakers didn't use headstones to distinguish one grave from another or lay out graves in family plots because it went against their testimony of simplicity. They gradually moved towards the use of headstones and family plots, and evidence of this shift is readily apparent. In the oldest section, some family plots have no headstones at all while others used native brown stone with no names or markings. Eventually, Quakers adopted the practice of erecting headstones with names and dates, but they kept them modest. Unlike other cemeteries active in the Victorian era, there are no ornate obelisks or weeping angels.

We then stopped at the graves of Moses Eastburn and his son, also named Moses, who owned the farm immediately west of the graveyard. The elder Moses Eastburn was successful farmer and was known as a very kind man. His empathy for the poor led him to become one of the County Directors of the Poor who managed the Bucks County Almshouse.

While he held that office, he took in a young orphan from the almshouse named Mahlon Gibbs as an indentured servant. Mahlon was half African and half Lenape, but under Moses' care he received a better education than many white children, and unlike most black indentured servants he was able to purchase his own farm after his term of service ended. Moses Eastburn Jr. was also a prominent member of society, but at his grave we focused on the elements of his daily life revealed in the account book he kept for the years 1851-1862, which survives in the collection of the Bucks County Historical Society. It contains a number of items that you might not expect from a farmer in the 1850's. He purchases daguerreotypes, sends telegrams, travels regularly to neighboring cities and even to upstate New York, subscribes to *Scientific American* and the *New York Tribune*, and has abundant access to fresh seafood from the coast of New Jersey. Interestingly, as a Quaker pacifist he also donated money for soldiers' uniforms in the lead-up to the Civil War.



Moses Eastburn Jr.



A group of 85 braved damp, chilly weather for a tour of Solebury Friends Cemetery led by Rayna Polsky (left on wall) and Jesse Crooks (front).

We then visited the grave of Robert Kenderdine, a Quaker schoolteacher who renounced pacifism and joined the Union army during the Civil War, dying of wounds he received in the Battle of Gettysburg. The Civil War posed a serious challenge to Religious Society of Friends. While some joined the army, many more provided material support or at least condoned the taking up of arms. At Solebury Meeting, the actions of the members were so at variance with their belief in the peace testimony that they found it necessary to record their wrongdoing in a meeting minute in the January of 1866, laying out the reason for their actions and affirming that they were wrong to support the war and hoped that the Religious Society of Friends would act more in accordance with their principles in the future. Both of Robert Kenderdine's adult brothers also fought in the war. Watson, who returned to Solebury after the war, took over his family's mills along the Cuttalossa, which he ran until his death in 1800. He too is buried in the Solebury Friends graveyard.

The fact that slavery was a central issue in the war seriously tested Quaker pacifism. Friends had been opposed to slavery for generations, and many took great risks to aid fugitive slaves. The tour included the grave sites of people involved with the Underground Railroad, both Quakers and members of the African American community. We visited the grave of Jonathan P. Magill, whose farm on Aquetong Road was a stop on the Railroad. One of them, Samuel Scott, escaped from slavery in Maryland with a few other men (two of them his cousins) in 1847. He made it to Magill's farm, and then Magill's son transported him to the farm of John Blackfan (also at Solebury Meeting) who came up with his new free name and hired him to work on his farm for many years. Scott lived the rest of his life as a free man in Solebury, dying in his nineties in 1911, and was buried at Solebury Friends Meeting. Scott's cousin, who assumed the free name Parry Hemsley, to refuge with Mahlon



Samuel Scott

(continued)

Gibbs, where he lived for at least a few years pretending to be a native of Pennsylvania.

We then visited some of the artists known as the Bucks County Impressionists. We stopped at the graves of William Lathrop, who moved to Phillips Mill and founded the New Hope artists' colony, renowned painter Daniel Garber, who followed Lathrop to Solebury and purchased the former home of Watson Kenderdine in the Cuttalossa valley, and R.A.D. Miller, another noted painter committed suicide at his wife's grave and then was buried beside her.

We ended the tour by visiting the section of the graveyard known as Stranger's Row. When Solebury Meeting opened their graveyard in 1809 it was common practice among most religious groups to refuse burial to non-members. Solebury Friends was an exception. They set aside a portion of their graveyard for non-Quakers who had nowhere else to turn, and even buried paupers and the bodies of strangers unknown to the community. They also accepted people that lived lives antithetical to Quaker principles. We visited the grave of Eli Doan, a constable who persecuted

Quaker pacifists by jailing and fining them, as well an unnamed child of Elizabeth Solomon, who had been disowned from the Society of Friends for conceiving a child out of wedlock and then marrying the father outside of Meeting. We also stopped at the graves of various unknown strangers, including a body listed only as "Irish woman," a boy who drowned in the canal, a baby from Philadelphia, and transients whose bodies were discovered outdoors.

At the far end of Stranger's Row, we visited the section containing families that once belonged to Mount Moriah African Methodist Episcopal Church, which stood on the edge of New Hope Borough at the end of West Mechanic Street. The congregation of free black families met there for about a century, dating back to at least 1818. In the early 1900's the church fell out of use and was torn down. Today only the cemetery remains. After Mount Moriah closed some of the families, having lost their old burial ground, began using the Solebury Friends graveyard as their own.

Jesse Crooks Oct. 2012

Meet the new Board members

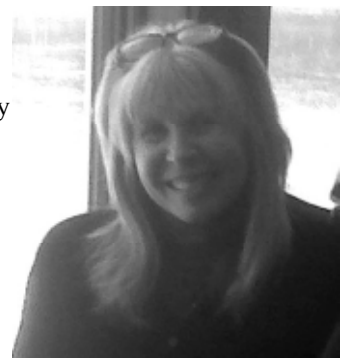
Linda Kenyon is well-known to most of us as an elegant hostess and party organizer. With Linda as Events Chair for the Society we can all look forward to her creating unique occasions for all of us to enjoy.

Linda is a veteran of stage, film and television. On stage, she has been the Duchess of York in *Richard III*, Lady Capulet in *Romeo and Juliet* and numerous other roles. Linda starred in two one-woman shows in recent years, *Julia Child* and *Eleanor Roosevelt*. See her as the screaming society woman in the movie *Head of State*. Her voice can be heard at the Holocaust Museum in Washington DC and the Gettysburg Visitor's Center.

Linda lives in one of the most beautiful converted barns in Bucks County. We are delighted to have her talents and enthusiasm on the Society Board.



Melody Hunt is a long time Lumberville resident who has been married to Bill Tinsman for thirty years. She is a principal in the family business, Tinsman Bros., Inc.. Established in 1785, Tinsman Bros. is the oldest lumberyard and purveyor of building supplies still in operation in the United States. Bill and Tom Tinsman are the fifth generation of the family to run the company and pride themselves on the quality lumber and services they offer.



Melody is a mother, an artist, a dog lover and works part time at Chico's in Peddler's Village. She volunteers with the Paunacussing Watershed Association, Solebury Meeting and Shad Fest and is on the Lumberville Founder's Day Committee that for twenty-five+ years has arranged the village's town picnic. She has agreed to help with the fund raising needed to restore the schoolhouse as she is, in her own words, "pretty good at 'Raising the Roof'"!

History Quiz answer:

The original wooden covered bridge between what is now known as Centre Bridge and Stockton NJ was begun in 1812, completed in 1814.

Santa Display at the Musuem

The Society celebrated the Christmas season with a display of antique Santa figures; a unique collection provided by Jim Hill and Kathy Hausman. The pair were on hand to answer questions. Board member Rayna Polsky read *The Night Before Christmas* to children who attended, and all enjoyed hot cocoa and gingerbread cookies.



Jim Hill and Kathy Hausman



Rayna Polsky reads The Night Before Christmas to some young visitors.

Support our Business Members

We are grateful for the support of the local busiess community and encourage you to patronize these fine businesses:

Steward

Holly Hedge Estates/1740 House
Joe & Amy Luccaro

Protector

Black Bass Hotel, Lumberville
Tinsman Brothers Inc., Lumberville

Guardian

Augenblick & Co. PC
Delray Plus True Value
Eagle Diner
First Federal of Bucks County
First National Bank & Trust Company of Newtown
Mancuso Show Management
Nakashima Woodworkers
New Hope Crushed Stone

HOMESTEAD REAL ESTATE

My Knowledge is Your Advantage

DIANE M. JOHNSTON, REALTOR
DJOHNSTON4@AOL.COM

4950 RTE. 202, SUITE 2F
P.O. Box 356
HOLICONG, PA 18928

215-862-2828 OFFICE
610-662-7105 DIRECT

Watch for the next Museum display beginning in mid February. This display will feature the Hill/Hausman collection of world globes. Visit weekdays from 8 a.m. - 5 p.m. located in the lobby of the Solebury Township Building.

With Gratitude . . .

Members are the backbone of our organization. We are deeply appreciative of the support of the residents listed below who have renewed their membership or joined the Society since the last newsletter.

Violet & Jack Ahern
 Marianne Bender
 David Benner
 Franta Broulik
 James D. and Rhea Brown
 John Cannon
 Lois W. Carbone
 John and Carol Carpenter
 Joe Chiesa
 Tim and Millena Coffey
 Frank & Patty Cosner
 Stephen and Donneta Crane
 R. Scott Creighton
 Suzanne Crilley
 Jesse Crooks
 Gwen Davis
 Helen Devlin
 Barbara M. Donnelly
 Sally Drayer
 Ruth Durmin
 James Higgins and Adam Esser
 Phyllis & Gary Euler
 Jennifer Farley
 Ronald and Shirley Felix
 Paul & Rita Flack
 Michael & Jean Fowler
 Patrick & Mary Fowles
 William Cordrey & Ryan Fox
 Bruce and Sheryl Fredendall
 Susan Fuerst
 Pamela Burrell & Peter Gatto
 David and Connie Gillis
 Jacqui & David Griffith
 Lola & Robert Haddow
 Don and Martha Harris
 L.Rhea and Susan Harvey
 Peggy and Bill Hecht
 Kathy Hausman & Jim Hill
 Nancy Decker Holland
 Richard Gold and John Hollyday
 Les and Pam Isbrandt
 Diane & Ian Johnston
 Alan & Gail Keim
 Gregory D. Kirk
 Sandra & Richard Kittredge
 Richard G. and Margaret Knoster
 Ann & Yanek Liebgold
 C.L. Lindsay
 David DiMicco & Meagan Longcore
 Mr. & Mrs. William MacKay
 Diane Glossman and Richard Magruder
 Thomas and James Markey

David and Carole Martin
 Wendy E McGarry
 Ian & Jane McNeill
 Sarah Melson
 John & Gerry Merriam
 Charles and Pearl Mintzer
 Kevin & Linda Morrissey
 Peddlers Village Partnership
 Michael and Amy Petrosini
 Anthony Prestipino
 Dr. Gerhard and Barbara Raabe
 Ann R. Rainey
 Brenda Redfish
 John V. Rees
 Will Rivinus & Dickie Ann Boal
 Suzanne & Edward Sanson
 Michael J. & Elizabeth Schmidt
 Paul Schwehm
 Curt Shreiner
 Michael & Lavinia Smerconish
 Gail Sorkov
 John & Irene Szykowski
 Col. Joseph and Betsy Thomas
 Melody Hunt and William E. Tinsman
 Robert & Lorraine Topolin
 Michael Prediger and John Touhey
 August and Donna Turturro
 Joe and Tori Uhler
 Mrs. I Von Zelowitz
 Mike and Ruth Ann Wilson
 Franca C. Warden
 Ann Warren
 Curt Wary
 Carol Church & Gary Wilmore
 Patricia Witlicki
 Ted and Charlotte Zanidakis

Every effort has been made to publish a complete and accurate list of memberships received since the last newsletter (June) and up to about Jan. 11, 2013. We regret if there are any omissions.

Many Thanks . . .

The generosity of so many folks help the Society throughout the year. We greatly appreciate the support of our friends and neighbors:

Museum Exhibit

Jim Hill and **Kathy Hausman** for providing the display items for the Santa exhibit

Sally Jagoe and **Robert McEwan** for organizing the exhibit.

Annual Picnic

Will Rivinus and **Dickie Ann Boal** for hosting the event at their lovely farm. **Paul Lanctot, Tom Dietrich, Pat Witlicki, Marne Dietrich, Chuck Mintzer, John and Penny Armagost, Don Fitting, Dick Carlson, Steve Crane, Phil Getty, and Gerry and John Merrium.**

Annual Meeting

Linda Metcalf for organizing the quiz; **Marne Ditterich & Phil Getty, Paul Lanctot, Dick Carrick** for set up; **Dave Benner & Steve Crane** for parking; and **Chuck Mintzer & Pat Witlicki** for bar tending.

New Year's Brunch

Beth Carrick and **Donneta Crane** for securing auction and raffle items; **Beth Carrick** for making the raffle and auction displays so beautiful; **Marne Ditterich** for helping the board decorate tables. See pg. 3 for more.

The **advertisers** in the *Solebury Chronicle* help offset the cost of producing the newsletter. These are local businesses, and we urge your patronage.

(Call 215-297-5091 or email soleburyhistory@verizon.net to place your ad in the next *Solebury Chronicle*.)

YOU. FIRST.

SOLEBURY INVESTMENT GROUP
 Private Wealth Management

Michael Scavullo, CSA • 215-794-3393
 Solebury Investment Group, LLC is not affiliated with J.P. Turner, LLC.
 Member SIPC - JP021010-161

5296 Bailey Court • Doylestown, PA 18902



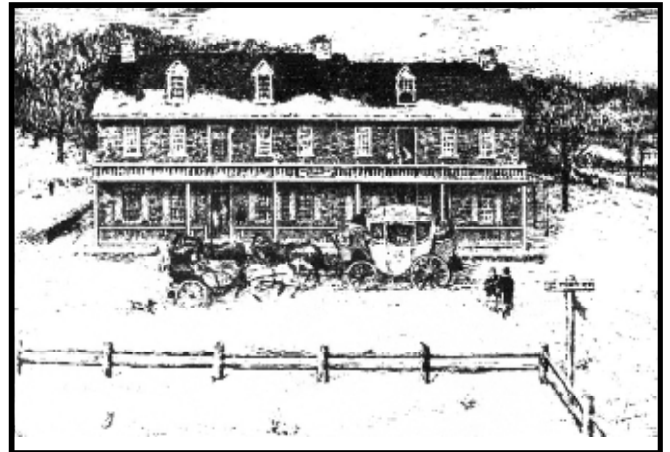
Solebury Township Historical Society
Drawer 525
Solebury, PA 18963

Upcoming Events

- February 10** **Museum display of World Globes**
ongoing for 8 weeks.
- April 14** **Annual Open House at the Schoolhouse**
1-3 p.m.
- May** **History Walk of the Cuttalossa Valley**
Date to be announced

STHS members will receive invitations to all events.

Do You Know?



Do you know where this historic house is located in Solebury and what Bucks County impressionist painter lived here?

Call 215-297-5091 or email your answer to soleburyhistory@verizon.net. You may win a prize!