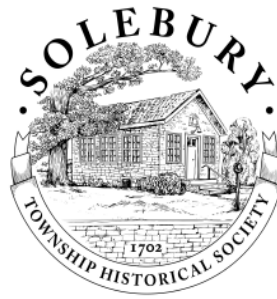


Salebury

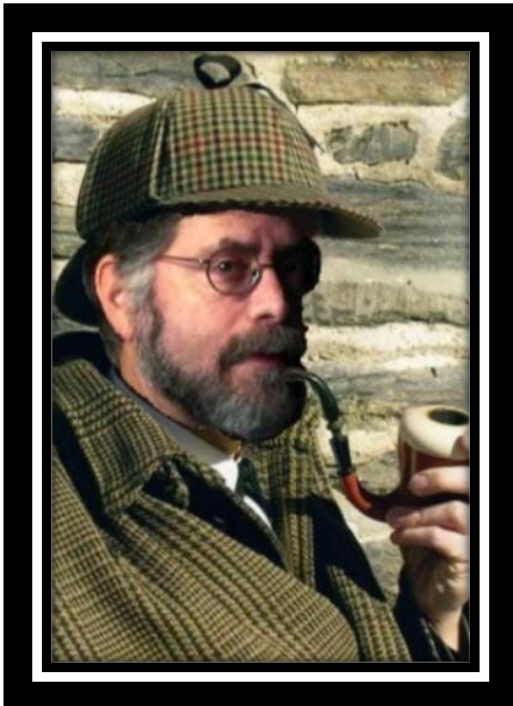


Chronicle

A Newsletter of the Solebury Township Historical Society

Inside this Issue

- **Annual Meeting Recap**
- **Show and Tell Recap**
- **Solebury Township Trivia**
- **Visitors to the Schoolhouse**
- **An Afternoon at the Old Mansion: Armitage Property Tour Recap**
- **Ask Archives: Centre Bridge**
- **Upcoming Events**
- **Historical Wall Maps of Bucks County, Part 2**
- **Cartwheel Inn Property Construction**



Annual Meeting Recap

STHS held its Annual Meeting for members on Sunday, September 22nd at the Honey Hollow Visitor Center. The featured presentation at the meeting was by Jeff Marshall, in his persona of “Sherlock Homes, Old House Detective”. With almost 50 years in researching old buildings in Bucks County, Jeff Marshall is one of the most experienced old house detectives and the author of half a dozen books on local history, old houses and barns. This was a great introduction to the principles of identifying the history of the structure of a house, offering clues to dating the building. Some of these were sequencing the construction of different parts of the house, features which suggest date ranges for architectural features like fireplaces or door frames, and descriptions of factors considered by house builders and homeowners in different periods. There were lots of questions and comments, which led to an interesting discussion between Jeff and the audience. The official meeting was held prior to the presentation. Its agenda included reports from STHS officers and committee chairpersons and the vote to approve the Society’s Board of Directors for 2025. By unanimous voice vote, the following were approved to serve on the incoming 2025 STHS Board of Directors: Wendy Appleton, Timothy D’Amico, James Davock, Kimberly Madarasz, David Ormsby, Chase Palmer, David Smith, Russell Stephan, and Amy Woodford. Full minutes for the meeting are available on request: soleburyhistory@gmail.com.

Show and Tell

In June we held a Show & Tell program at the schoolhouse; this was the first of what we hope will be an ongoing series. People brought a wide variety of objects and stories to share with their Solebury friends, family and neighbors. Historical properties included the Cuttalossa Turkey Farm, Tuckamony Farm (named for Lenape Indian Peg Tuckamony), and the Eastburn family homestead on Laurel Road. The Wismer family and the Lear and Price families were represented by artifacts and photographs presented by their descendants. Moments and people from Solebury's past were brought back to life with a Wycombe Reading RR Stationmaster's conductor's hat, a 1925 calendar from the S.J. Heed General Store in Lumberville, the Burn Bridle Hill ghost story, a 1910 class autograph book from an area high school, pictures of early 20th century garden pageants at Paxson estate "Lindencroft", and a Gret Barkin pin from the 1960s. There was lively discussion throughout the afternoon prompted by the things Shown and stories Told. We encourage you to contact us any time to let us know about an object, photograph, or memory you'd like to share. And watch for the announcement of our next Show & Tell!



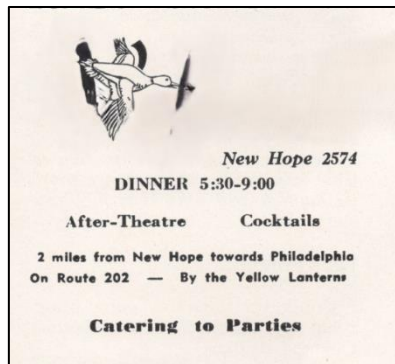
PAGEANT
AT
LINDENCROFT
(Off River Road, between Center Bridge and Lumberville, Pa.)
DANCE PANTOMIME, "The Boy of the Sea"
Written and staged by C. Basil Clunk
Music directed by Marie H. Paxson

Voluntary Subscriptions for FRIDAY EVENING, JULY 24, 1936
NEW HOPE HEALTH ASSOCIATION 8:30 D. S. T.
and TRINITY HALL, SOLEBURY (If stormy, Saturday evening)



Solebury Township Trivia

Do you recognize these ads from restaurants in Solebury circa 1956? The names have been blurred out and the answers are found on the last page.



Visitors to the School House

We recently had several out-of-town guests to the schoolhouse. Louis and Phyliss Kenderdine from Tennessee came up to visit the area and relatives. They are descendants of John E. Kenderdine, who established an industrial area in the Cuttalousa Valley with sawmills and grist mills, ran the Hard Times tavern and ultimately called the area “Lumberton” to distinguish his lumber mills from Lumberville’s mills.

Ron Getz and his wife Kathy came from the Poconos and attended our “Afternoon at the Old Mansion” event at the Armitage homestead. Ron’s mother Dorothy was a descendant of the Armitage family. Dorothy Burk and kids (Tracey, Kevin, Bryce) came all the way from Texas to further research their family heritage of the Eastburn family. Gerri Merriam who owns the Samuel Eastburn homestead on Laurel Road was gracious in giving a tour of the house and barn on a beautiful fall day. They were also treated to an impromptu tour at the Black Bass and its history going back to the Revolutionary times.

Cindy Schoeder and husband came from Indiana to research several early settler families who are her ancestors. These include the Armitage, Hartley, Paxson and Townsend families. Christopher Smith from Seattle visited us to look into his Solebury’s Scarborough family history and research the Lenape heritage.



An Afternoon at the Old Mansion

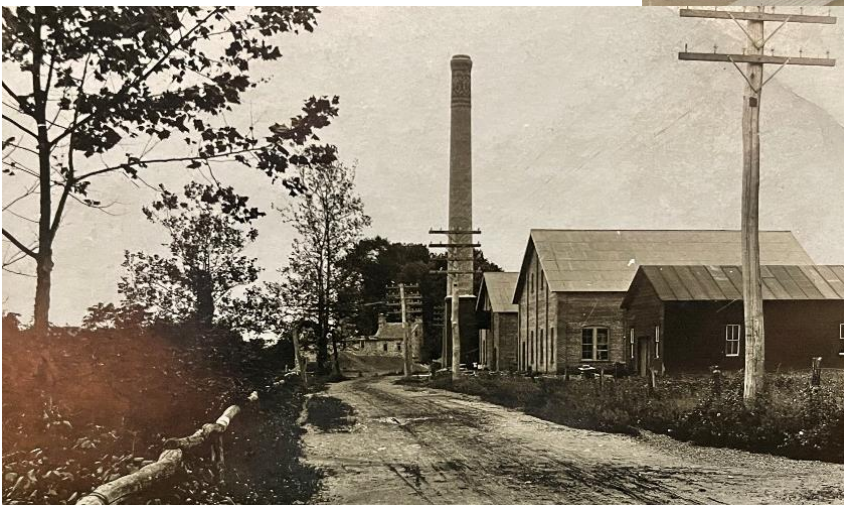
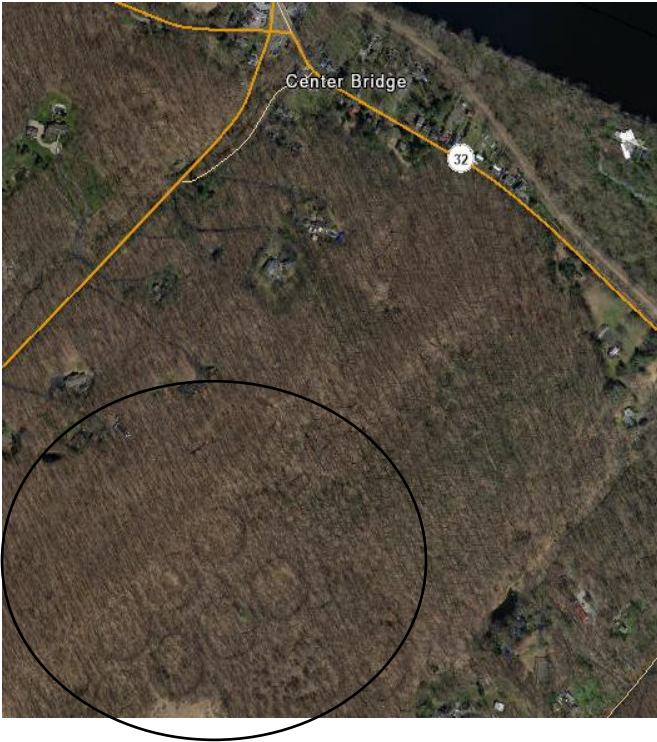
Paul Kenny and Kate Surmay, owners of the Armitage Old Mansion, provided STHS members with a wonderful afternoon of history, music and food, a fundraiser to benefit the society's mission. Folks were entertained by tours of the restored barn conducted by Micheal Cuba and Jeff Marshall with commentary by Paul and tours of the landscaped gardens conducted by Kate. Fun was had by all! The Old Mansion sits at the top of the Cuttalossa Road on Sugan Road. The Mansion was originally built around 1755 with additions made over the years. The barn was built in 1769. Behind the house the Cuttalossa Creek was dammed to create a pond for the purpose of providing the mill race to the Armitage mill, located several hundred yards away.

Samuel Armitage (1716-1801) was born in Pontefract, West Yorkshire, England, and came over to Pennsylvania to settle in Solebury around 1739. He bought 200 acres from Henry Paxson along the Cuttalossa Creek. His work experience consisted of several trades – weaver, miller and farmer. He married Elizabeth Hambleton in 1748 and had two children, James and John but his wife unfortunately passed away not long after John was born in 1751. During this time Armitage began to build the first grist mill on the Cuttalossa Creek assisted by his neighbor Steven Townsend. The mill, known as the Armitage Mill, stayed within the same family for 170 years excepting for brief ownership by others. The mill was used to grind oats, corn, and animal feed. A sawmill was added nearby and later a plaster mill in 1780. This newsletter article's history of the property and family is summarized from Eastburn Reeder's "Early Settlers of Solebury, PA". Much thanks to our hosts for opening up this historical property to our membership, and their donation of music, drinks and food expenses. We would also like to thank our sponsors (McCaffrey's, Giant, Boo's Brewing, Caleb's American Grill, HollyHedge) for donations as well.



Asks the Archives: What are those circles around Centre Bridge?

Earlier this year, our Heritage team received a request from someone inquiring about some circles that they saw on an aerial photo near Centre Bridge. These circles, which are usually only seen on aerial photos during winter months, are the earthen remains of when this area was home to oil tanks. More information about this area can be found on our website in the pamphlet [In the Vicinity of Limeport](#) by George S. Havens. This publication describes the establishment and operation of the lime kilns and quarries from the mid-19th century until the mid-20th century, as well as a brief history of the Tuscarora Oil Company's pumping station. Because of a large leak, undetected for a long time, Tuscarora was responsible for wide-spread water pollution between [Centre Bridge](#) and Phillips Mill. Even though the company has been liquidated, there is a continuing responsibility to provide clean water for the residents of the area. In December 2016, Bridget Wingert wrote an [article in the Bucks County Herald](#) about Limeport and the Tuscarora Oil Company, and Michael McCann added his memories in a [letter to the editor](#). We also want to thank Betty Davis of Wrightstown for these photos of the industry and fires in Centre Bridge in the early 1900s.



Upcoming Events

Nov 3rd – History of Aquetong Spring

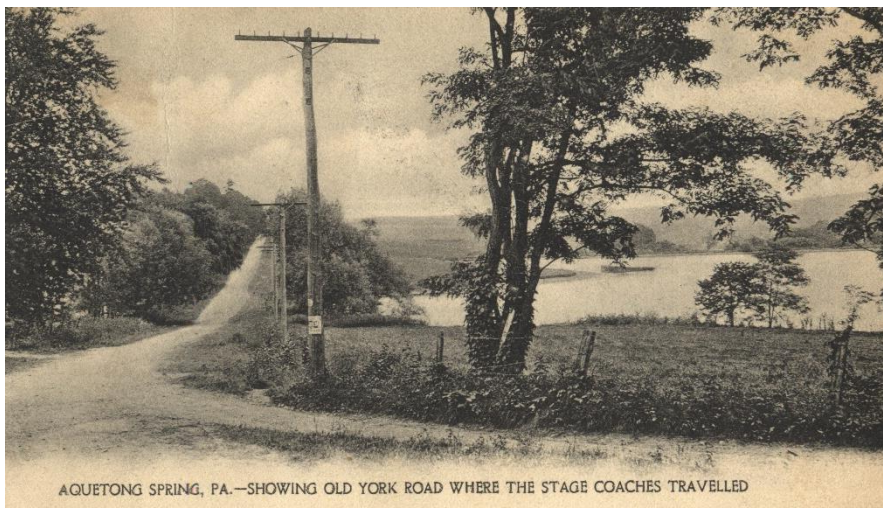
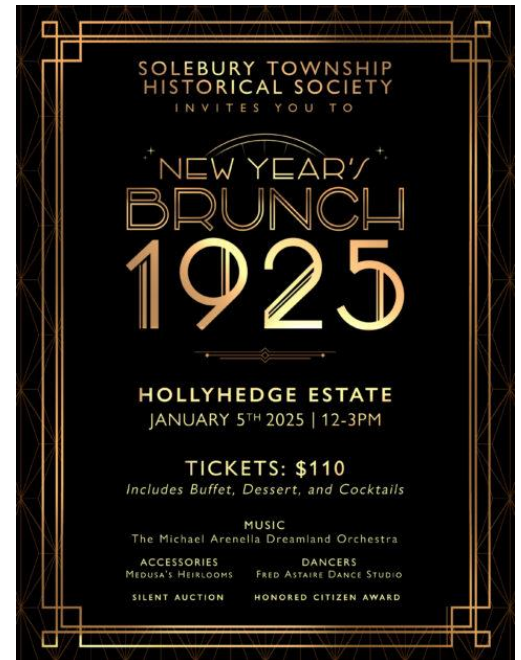
Patty Bacon will present the history of the Aquetong Spring on November 3rd at 2pm. The Aquetong Spring was well known by the Lenape Indians who lived in the area. The fresh water was used by them and later by the European settlers in the area. The dependability of the water flow made the Aquetong Creek a perfect spot for mills. **This presentation will be held at the STHS School House.** Free to Members/\$10 Non-Members. Tickets available at [Eventbrite](#).

Nov 24th – Holiday Open House

Stop in and celebrate holiday cheer at our open house! Come and meet our members and volunteers and enjoy refreshments. Check out recent donations to our collections from the Solebury community. Hewn Spirits will be supporting STHS with their limited edition Solebury Rye. Please join us at our holiday open house for a tasting! Location: Solebury Township Historical Society Schoolhouse, 2pm-4pm. Open to both members and non-members.

Jan 5th, 2025 – New Year's Brunch!

Join us for a spectacular return to the New Year's Brunch at HollyHedge Estate! On January 5, 2025, from 12PM to 3PM, we invite you to indulge in the STHS Brunch featuring a delightful spread of celebratory food and signature cocktails along with live music by Michael Arenella and the Dreamland Orchestra. Step back into the glamour of 1925, the era of Art Deco, with themed décor that will transport you to the time of Jay Gatsby and Daisy Buchanan. Don't forget to participate in our fabulous silent auction and announcement of our Honored Citizen award. We are excited to welcome you to this celebration of the new year. Let's toast to a memorable afternoon together and help support STHS! Tickets are \$110 and available at [Eventbrite](#).



Visit the Schoolhouse

Are you interested in learning about your family or house's history? What about researching an historic organization such as the Solebury Farmers Club or the Bucks County Federation of Women's Clubs?

If so, feel free to visit with us to learn more about these topics and our collections. The Schoolhouse is now open weekly on Wednesdays from 10am to 12pm. Also, we are open by appointment, call us at 215-297-5091 to schedule or send an email: soleburyhistory@gmail.com

Interested in Volunteering?

The Society, like every non-profit organization of its type, needs volunteers to make its programs and social events successful. We appreciate any time that you can give and need your help. Here are some of our volunteer opportunities:

- Oral History Interviews
- Research Library/ Research Requests
- Board Members
- Communications
- Events Committee

If you are interested, call us at 215-297-5091 to or send an email: soleburyhistory@gmail.com

Membership Seasonal Giving

If you've enjoyed the many educational and social activities we offered in 2024, please consider making STHS a part of your end of year giving. Your support would be appreciated as we've got lots of new and interesting programming planned for 2025. Click here to make an end of year donation or to update your [membership 2025 now!](#)

Who's Behind those Historical Wall Maps of Bucks County? Part 2

This is a continuation of our map history series from the previous newsletter showcasing maps within our collection. The 1859 Farm Map of Solebury Township was surveyed, drawn, and published by Matthew Hughes, with the lithographs created by Friend and Aub. According to the Library Company of Philadelphia, "Friend and Aub was a partnership established ca. 1852 between Norman Friend and Jacob Aub, specialized in map engraving and lithography. The firm, located at 332 Walnut Street remained in operation until dissolved by "mutual consent" on July 19, 1860. Much of their map work was done in collaboration with Wagner & McGuigan and L. N. Rosenthal."



Little information can be found about Matthew Hughes. An article published in Fall/Winter 2002 by the New Jersey Historical Society titled "The Face of the Country: Overlooked Local Maps of Nineteenth Century New Jersey" points to the large quantity of maps completed by four men with the last name Hughes. These men, Thomas, James, Michael, and Matthew published over 30 maps for New Jersey, Pennsylvania, and numerous other states that all follow a similar format. The article assumes that these men must have been connected, but was unable to find concrete evidence for how they were so. A search on the Library of Congress website shows A Farm Map of Plumstead Township by Michael, as well as a Farm Map of Alexandria Township, NJ, by Matthew.

A search on Ancestry.com for the 1860 Federal Census found the four men living together in Trenton, New Jersey. James was listed as a map publisher, while Michael was listed as a surveyor. Michael was also listed as being born in Ireland.

Their maps are very important to identify who were the landowners in the mid-1800s and what their parcels looked like. Our Solebury Township wall map is hanging in the schoolhouse for visitors to see, and additional lithographic prints and then-and-now images can be found in the Solebury Township Administration Building.



MAP

Farm map of Alexandria Township, Hunterdon Co., N.J.

Township wall map showing individual farms, farmstead buildings, landowners' names, and farm acreages. Relief shown by hachures. Hand colored to emphasize individual farms. "Entered according to act of Congress in the year 1860 by Matthew Hughes in the ... eastern District of Pa." LC copy imperfect: Shellacked, brittle, darkened, extensively tape-mended on verso, mounted on cloth backing, hemmed in cloth (partially missing) along lateral...

Contributor: Hughes, Matthew - Friend & Aub

Date: 1860-01-01



MAP

Farm map of Plumstead Township, Bucks Co., Penn'a

Wall map showing farm outlines, owners' names, acreages, rural buildings, road network, and farm lanes. Hand col. to distinguish individual farms and roads. Oriented with north toward the upper right. Originally printed on 2 sheets (east/west, later conjoined). LC copy imperfect: Brittle, shellacked, cracked, darkened, cloth hemmed, missing small marginal sections. Includes note, list of map subscribers, table of road distances, and ill. of...

Contributor: Hughes, Michael - Friend & Aub

Date: 1859-01-01

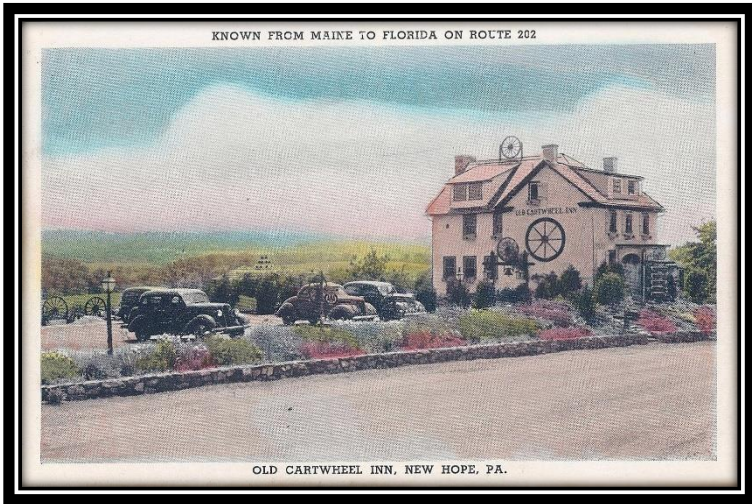


Former Cartwheel Inn Property Developed

If you've been driving on Route 202 through Solebury lately, you may have noticed construction going on next to the Logan Square Center. A new senior living facility is being built, along with medical offices and small retail shops. This is the first stage of the project, with a future project currently in the planning stage on the adjacent parcel that once housed the former Fountainhead Banquet Hall parcel. This future development is proposed to include 130 apartment units in four buildings; 20 single-family detached two-bedroom cottages; a clubhouse-community center; a community garden; 348 parking spaces.

The senior living facility and adjacent development is being constructed on two parcels that once contained the Cartwheel Inn, as well a series of vacant buildings that last housed an antique store. In 1959 a driving range also operated in this area. We went through our archives to see what information our collection has about the parcels, and we as used a drone to photograph the buildings before they were torn down earlier this year. We have shared more photos of this site on our Facebook page here: [STHS Facebook Post](#).





Diagram, appearing at the same time today at 8 p.m.

HILLTOP Driving Range

IS NOW

OPEN!

11 A.M. TO 12 MIDNIGHT
7 DAYS & NIGHTS WEEKLY

LARGE BUCKET OF BALLS\$1 (Inc. Tax)
SMALL BUCKET50c

GOLF LESSONS
Charlie Schneider & Ed Metre, members of The P.G.A., will better Your Score. Extra Courtesy To Beginners & Youngsters!
MAKE AN APPOINTMENT NOW!

Hilltop Driving Range

Next to Cartwheel Inn on Route 202
1 Mile South of New Hope VO 2-2203

Bill Hos
Hospital would be bill intro Tuesday D. Phil Markley The the purd for fina sick, be if the b sylvania ible for charity cost, w Under Pennsylv State gr at the man ha cost. There hospital view, L Querkert Last y provided \$136,026. State ai charity



THE OLD CARTWHEEL INN

TIME OUT FOR A KNIGHT WITH THE BUOYS

Monday Sept. 3rd
LABOR DAY SHOW
60's Revue
SHOWTIME: 11 p.m.

NEW MONDAY TEA DANCE
outdoors in our garden
Altitude Adjustment Hour 3-4 PM
Tea Dance 4-7 PM

CHECK OUT THE GATSBY COCKTAIL LOUNGE
EVERY THURSDAY
2 for 1 NIGHT

DISCO PIANO BAR
FRI. + SAT. SING-A-LONG WITH RUSSELL

Every Sunday Evening we present the song stylings of David Hopkins

TEA DANCE EVERY SUNDAY 4:30-7: (NO COVER)

VISIT THE TAVERN UNDER THE BRIDGE

ROUTE 202- AT THE SPUR IS THE PLACE TO GO-GO-GO-

DANCE


Sing For Days

Dance, Dance, Dance!

Cruise Under The Bridge

DANCE

Solebury Township Trivia Answers



Cartwheel Inn


ROUTE 202 NEW HOPE, PA.

UNDER NEW
MANAGEMENT

*excellent food, cocktails
and entertainment*

Closed Mondays — Sunday Dinner 12 to 9
Open Daily at 12

Enjoy our Patio for your Dining Pleasure




featuring
Lee Harlowe
at the piano



In 1745 this Hotel was a friendly refuge for the wayfarer traveling up or down the river. Today it is still a refuge with its gracious atmosphere, attractive rooms, and excellent food and wine.

*Jack Travers at the Piano
Fri. & Sat.*

LUNCHEON 12 - 2:30 DAILY
SUPPER 5:30 - 10 DAILY
DINNER SUNDAYS 1 - 9



Volare's

New Hope 2574

DINNER 5:30-9:00

After-Theatre Cocktails

2 miles from New Hope towards Philadelphia
On Route 202 — By the Yellow Lanterns

Catering to Parties



Overnight Lodgings with Private Baths
Special Complete Family-Style
Sunday Dinner \$2.00

DINING ROOM
Daily 11 a.m. to Closing
Sunday 1 - 9 p.m.

BAR

Under New Management
GEORGE WAGNER

Centre Bridge House
Four Miles Above New Hope on River Rd.
at CENTRE BRIDGE Pa.